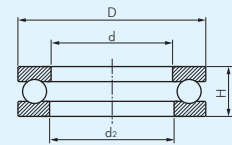
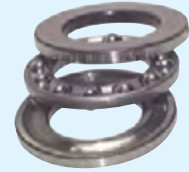


Axial Rillenkugellager

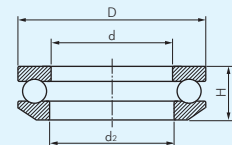
DIN 711

Typ ebene Auflage	Typ kugelige Auflage	Typ kugelige Unterlagscheibe	Wellen-Ø	d	d ₂	du	D	D _u	H	H _u
LA 51112	---	---	60	60	62	---	85	---	17	---
LA 51212	---	---	60	60	62	---	95	---	26	---
---	LA 53212	U212	60	62	78	---	95	100	28	31
LA 51312	---	---	60	62	---	---	110	---	35	---
---	LA 53312	U312	60	62	85	---	110	115	38,3	42
LA 51412	---	---	60	62	---	---	130	---	51	---
LA 51113	---	---	65	65	67	---	90	---	18	---
LA 51213	---	---	65	67	---	---	100	---	27	---
---	LA 53213	U213	65	67	82	---	100	105	28,7	32
LA 51313	---	---	65	67	---	---	115	---	36	---
---	LA 53313	U313	65	67	90	---	115	120	39,4	43
LA 51413	---	---	65	68	---	---	140	---	56	---
LA 51114	---	---	70	70	72	---	95	---	18	---
LA 51214	---	---	70	72	---	---	105	---	27	---
---	LA 53214	U214	70	72	88	---	105	110	28,8	32
LA 51314	---	---	70	72	---	---	125	---	40	---
---	LA 53314	U314	70	72	98	---	125	130	44,2	48
LA 51414	---	---	70	73	---	---	150	---	60	---
LA 51115	---	---	75	75	77	---	100	---	19	---
LA 51215	---	---	75	77	---	---	110	---	27	---
---	LA 53215	U215	75	77	92	---	110	115	28,3	32
LA 51315	---	---	75	77	---	---	135	---	44	---
---	LA 53315	U315	75	77	105	---	135	140	48,1	52
LA 51415	---	---	75	78	---	---	160	---	65	---
LA 51116	---	---	80	80	82	---	105	---	19	---
LA 51216	---	---	80	82	---	---	115	---	28	---
---	LA 53216	U216	80	82	98	---	115	120	29,5	33
LA 51316	---	---	80	82	---	---	140	---	44	---
---	LA 53316	U316	80	82	110	---	140	145	47,6	52
LA 51416	---	---	80	83	---	---	170	---	68	---
LA 51117	---	---	85	85	87	---	110	---	19	---
LA 51217	---	---	85	88	---	---	125	---	31	---
---	LA 53217	U217	85	88	105	---	125	130	33,1	37
LA 51317	---	---	85	88	---	---	150	---	49	---
---	LA 53317	U317	85	88	115	---	150	155	53,1	58
LA 51417	---	---	85	88	---	---	177/180	---	72	---
LA 51118	---	---	90	90	92	---	120	---	22	---
LA 51218	---	---	90	93	---	---	135	---	35	---
---	LA 53218	U218	90	93	110	---	135	140	38,5	42
LA 51318	---	---	90	93	---	---	155	---	50	---
---	LA 53318	U318	90	93	120	---	155	160	54,6	59
LA 51418	---	---	90	93	---	---	187/190	---	77	---
LA 51120	---	---	100	100	102	---	135	---	25	---
LA 51220	---	---	100	103	---	---	150	---	38	---
---	LA 53220	U220	100	103	125	---	150	155	40,9	45
LA 51320	---	---	100	103	---	---	170	---	55	---
---	LA 53320	U320	100	103	135	---	170	175	59,2	64
LA 51420	---	---	100	103	---	---	205/210	---	85	---
LA 51122	---	---	110	110	112	---	145	---	25	---
LA 51222	---	---	110	113	---	---	160	---	38	---
---	LA 53222	U222	110	113	135	---	160	165	40,2	45
LA 51322	---	---	110	113	---	---	187/190	---	63	---
---	LA 53322	U322	110	113	150	---	187/190	195	67,2	72
LA 51422	---	---	110	113	---	---	225/230	---	95	---
LA 51124	---	---	120	120	122	---	155	---	25	---
LA 51224	---	---	120	123	---	---	170	---	39	---
---	LA 53224	U224	120	123	145	---	170	175	40,8	46
LA 51324	---	---	120	123	---	---	205/210	---	70	---
---	LA 53324	U324	120	123	165	---	205/210	220	74,1	80
LA 51126	---	---	130	130	132	---	170	---	30	---
LA 51226	---	---	130	133	---	---	187/190	---	45	---
---	LA 53226	U226	130	133	160	---	187/190	195	47,9	53
LA 51326	---	---	130	134	---	---	220/225	---	75	---
LA 51128	---	---	140	140	142	---	178/180	---	31	---
LA 51228	---	---	140	143	---	---	197/200	---	46	---
---	LA 53228	U228	140	143	170	---	197/200	210	48,6	55
LA 51328	---	---	140	144	---	---	235/240	---	80	---

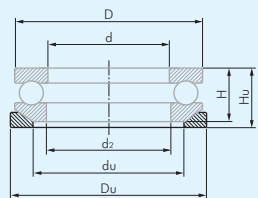
Axial Rillenkugellager bis Wellen-Ø 560 mm auf Anfrage



ebene Auflage



kugelige Auflage



kugelige Unterlagscheibe

* Wir liefern ausschließlich Lager der Hersteller SKF oder FAG!